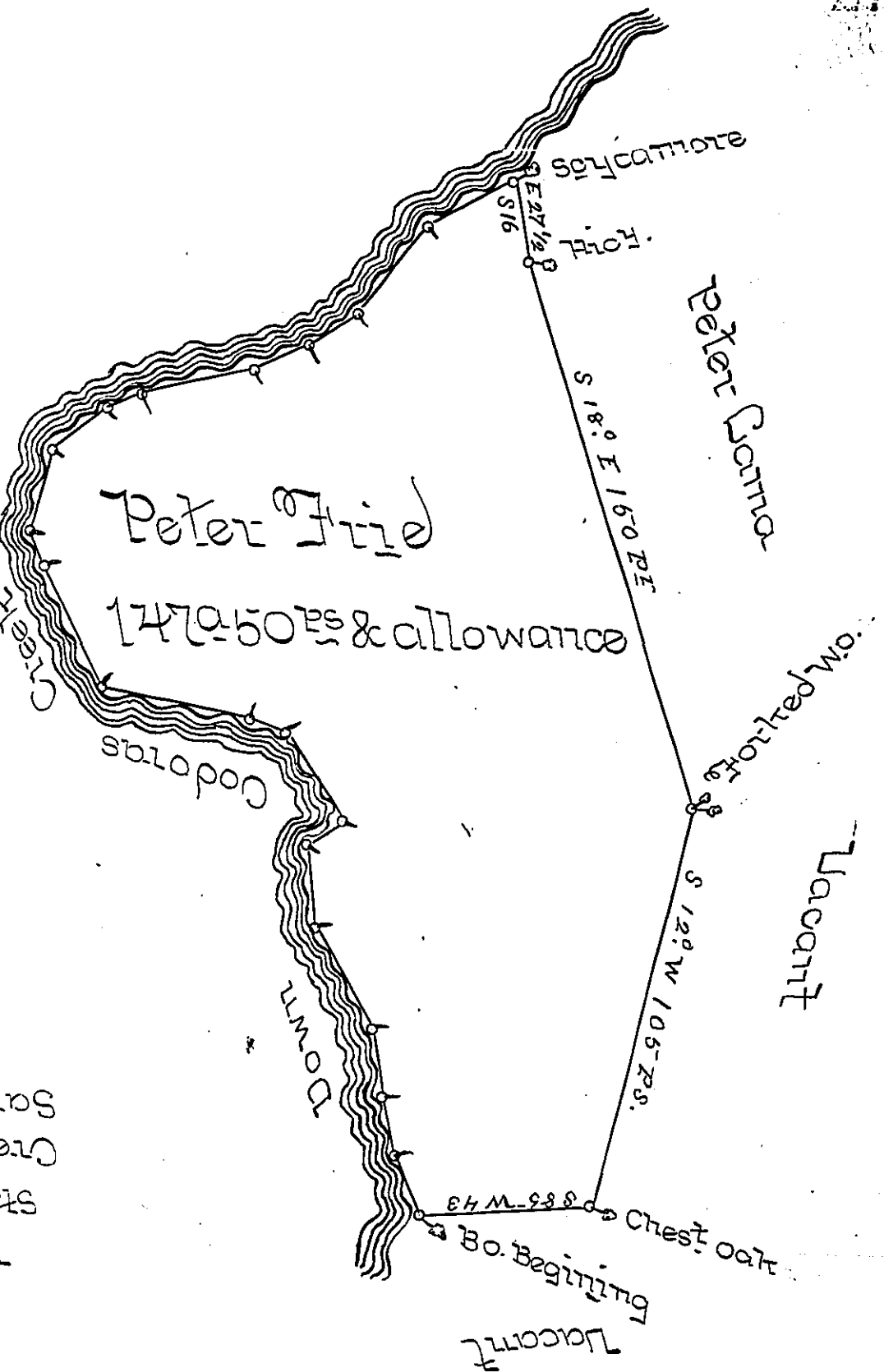


407

To a scycamore
on the bank of
the Creek

- N 61 E 25
- N 38 E 30
- N 59 E 15
- N 68 E 15
- N 74 E 32
- N 62 E 10
- N 62 E 16
- N 15 E 22
- N 18 W 11
- N 28 W 36
- N 80 W 40
- N 73 W 10
- N 36 W 28
- N 51 E 11
- N 8 W 2 1/2
- N 32 W 31
- N 13 W 18
- N 18 W 15 1/2
- N 26 W 17 25

Beginning at a Black oak
standing on the bank of Codorus
Creek running thence down the
Same



A Draught of a tract of Land Situate within the Manor of
Springettsberry York Township York County Surveyed to
Peter Fried in pursuance of a grant from Thomas Penn for
1502 dated the 30th day of October 1736 Surveyed the 24th
day of the 8th mo 1765

By Wm Matthews D.S.

To John Britens Sr.

IN TESTIMONY that the above is a copy of the original remaining on file in
the Department of Internal Affairs of Pennsylvania, made
conformably to an Act of Assembly approved the 16th day of
February, 1833, I have hereunto set my Hand and caused
the Seal of said Department to be affixed at Harrisburg,
this first day of November 1898

James W. Latta
Secretary of Internal Affairs.